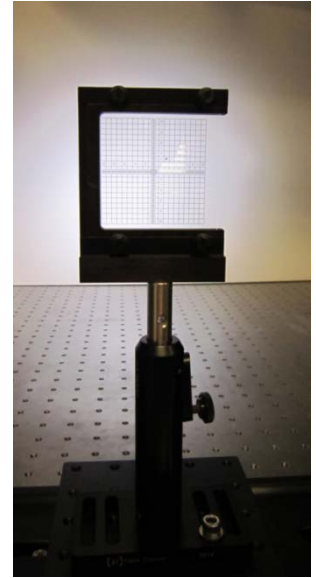


# Optical Imaging Target

(Product ID: EC-T-25)

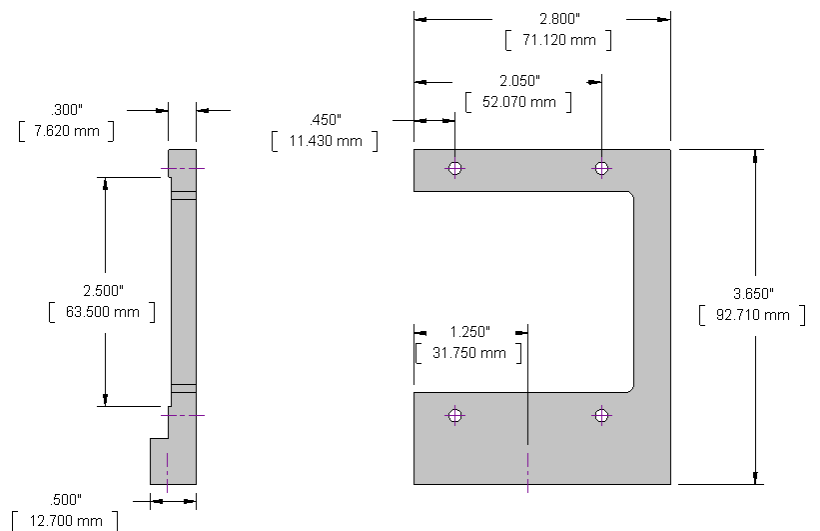
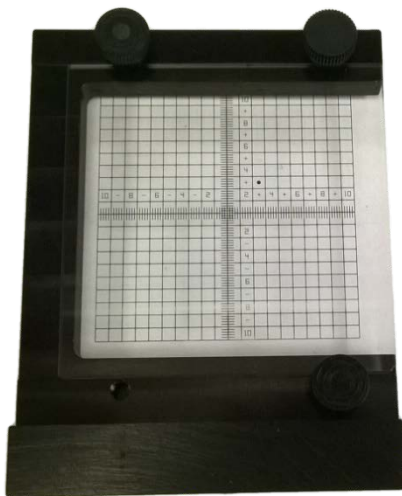
Optical Imaging Targets are used to set up planar imaging experiments. Align the laser sheet(s) to the front target face and then focus one or more cameras on the target. The numbers and orientation marks correlate one target image to another. At 1 mm thick, the back surface can be viewed with minimal error. One image can be warped to another with the targets using the grid crossing points. They are designed such that the axis of rotation is along the front target face. With a clear optical view of the target (and a completely clear edge) a laser sheet can easily skim along the target face. Due to the accuracy of the target image, the recorded image can be used to assess resolution. Using a high-resolution image, a line-spread function can be found by comparing the recorded images with the "ideal" high-resolution image.

Holders are made from aluminum and are black anodized. They have a "C" shaped design so that one of the target edges is "exposed" (see the photo). The targets are held in place by 4 nylon thumb screws, and the target slip-fits into a slot on the front-face of the holder. This design makes it easy to skim the laser sheet along the holder front-face. The holder is designed so that the axis of rotation is along the front face of the target (and so in principal, the target could be rotated 180 degrees and still have the front face in the same depth position).



## TARGET SPECIFICATIONS

<b>Substrate</b>	2.5 inches x 2.5 inches x 1 mm thick, fused silica
<b>Ruled area</b>	50 mm x 50 mm
<b>Major divisions</b>	2.5 mm; minor divisions = 0.5 mm
<b>Line thickness</b>	0.17 mm



Innovative Scientific Solutions, Inc.  
 7610 McEwen Road, Dayton, OH 45459  
 Phone (937) 630-3012 Fax (937) 630-3015

email: [issi-sales@innssi.com](mailto:issi-sales@innssi.com)  
 web: [www.psp-tsp.com](http://www.psp-tsp.com)

Any and all underlying information and technology contained in this document may be subject to U.S. export controls, including the Export Administration Act (50 U.S.C. Appx. §§ 2401 et seq.) and the Export Administration Regulations ("EAR", 50 C.F.R. Parts 730-774), and may be subject to export or import regulations in other countries. You are responsible for complying with all trade regulations and laws both foreign and domestic. Except as authorized by law or distributor agreement with ISSI, you agree and warrant not to export or re-export the information to any country, or to any person, entity, or end-user subject to U.S. export controls, including without limitation persons or entities listed on the U.S. Department of Commerce Bureau of Export Administration's Denied Parties List and the U.S. Department of Treasury's Specially Designated Nationals. You further represent and warrant that no U.S. federal agency has suspended, revoked, or denied your export privileges.